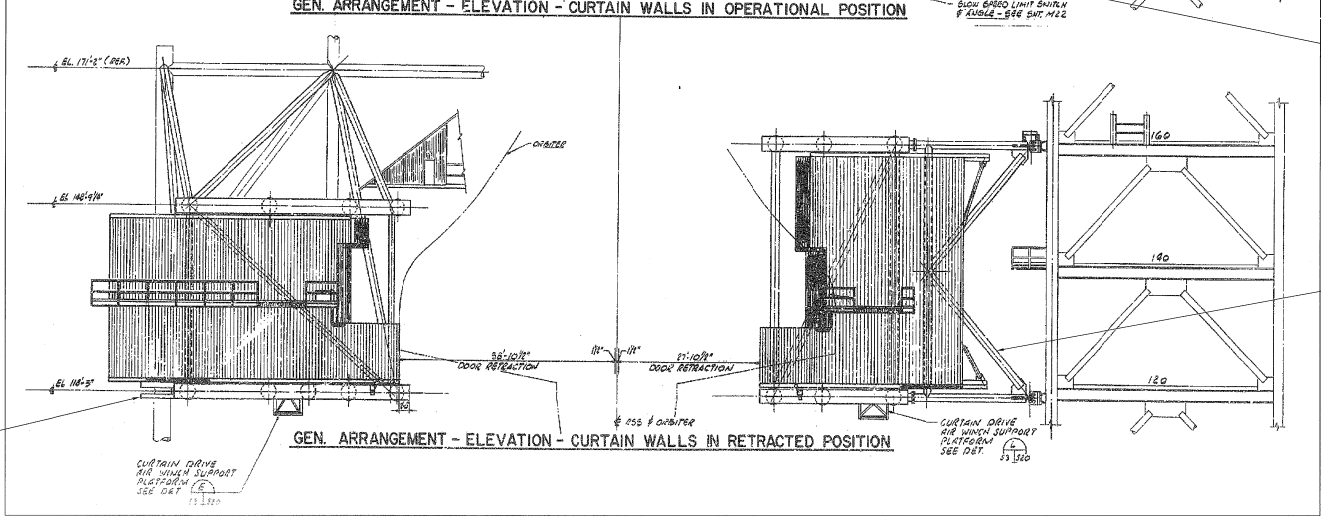
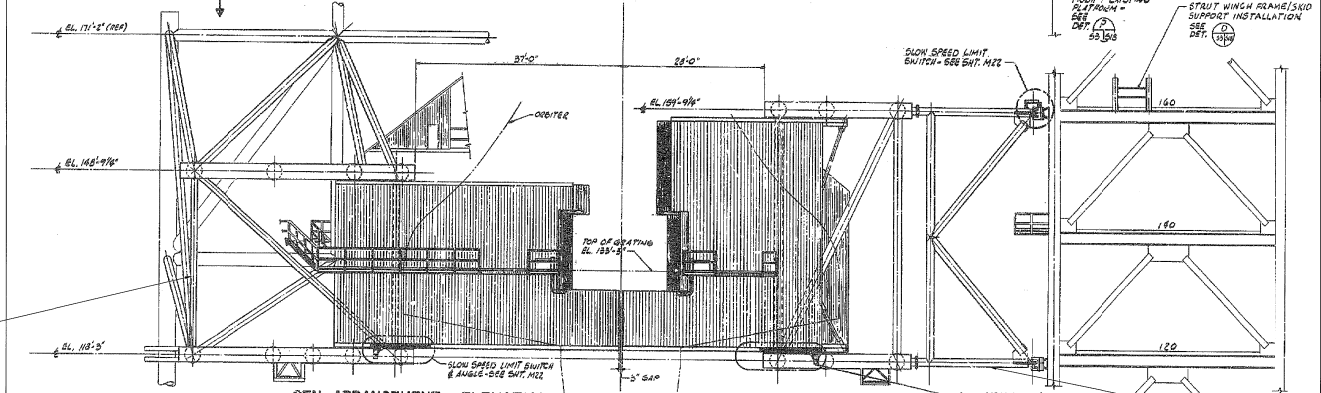
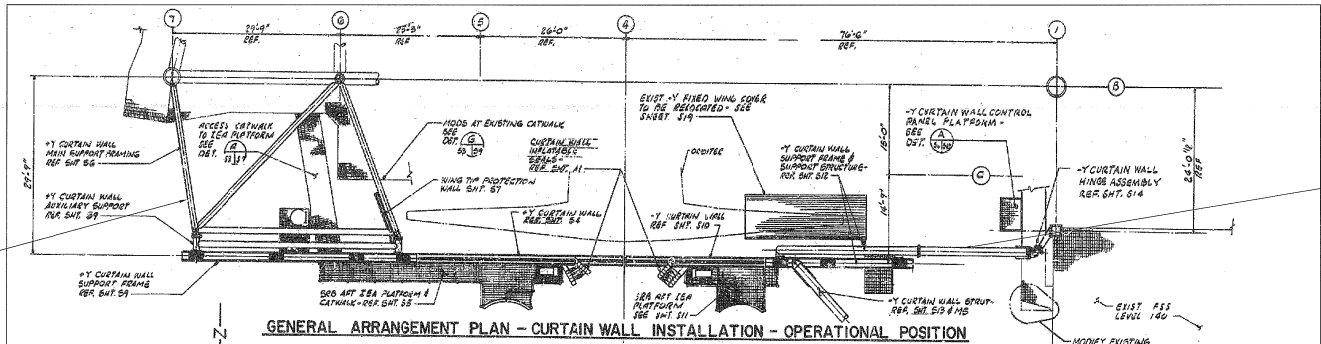


NOTICE: When Government drawings, specifications, or other data are used for any purpose other than in connection with a definite contract Government procurement operation, the United States Government thereby incurs no responsibility or obligation whatsoever, and the fact that the Government may have furnished, furnished, or in any way supplied the said drawings, specifications, or other data is not to be construed by implication or otherwise as in any manner conferring the holder or any other person or corporation, or conveying any rights or permission to manufacture, use, or sell any patented invention that may in any way be related thereto.

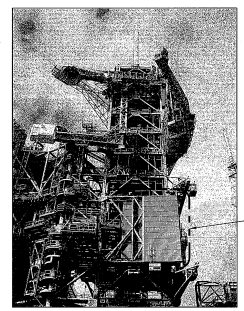


ORBITER WEATHER PROTECTION CURTAIN WALLS GENERAL ARRANGEMENT

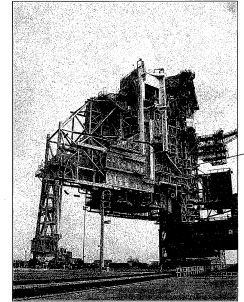
NTS - SOURCE FILE 79K24567 SHEET S3

FLAG NOTES

- 1 ORBITER WEATHER PROTECTION FRAMING ATTACHED TO RSS.
- 2 ORBITER WEATHER PROTECTION FRAMING ATTACHED TO FSS.



ORBITER WEATHER PROTECTION FSS
(LOOKING WEST)



ORBITER WEATHER PROTECTION RSS
(LOOKING NORTH WITH RSS LOCKED IN HURRICANE STATE)

THIS SPACE RESERVED

SYM	ZONE	DESCRIPTION	DATE	APPROVED
REVISIONS				
THIS DRAWING CREATED IN AUTOCAD 2007 FILE FORMAT AND WILL BE REVISED ONLY ON AN AUTOCAD SYSTEM. FILE: 14005008-642.DWG				



SIGNATURES		DATE	NATIONAL AERONAUTICS AND SPACE ADMINISTRATION	
DRAWN S. HAFERKAMP		08/24/09	JOHN F. KENNEDY SPACE CENTER, NASA KENNEDY SPACE CENTER, FLORIDA	
CHECKED S. BHIDE		08/24/09	LAUNCH COMPLEX 39B, DEMOLITION OF FSS/RSS AT LAUNCH COMPLEX 39B, DEMOLITION PACKAGE	
DESIGNED N. PONTILLO		08/24/09	ORBITER WEATHER PROTECTION CURTAIN WALLS GENERAL ARRANGEMENT	
SUBMITTED FOR 6/21/05				
APPROVED	DATE	SIZE	DWG. NO.	REV
<i>[Signature]</i>	6/21/05	F	222W2200001	
TITLE		PRD. NO.	SHEET	
S42		98580	57	